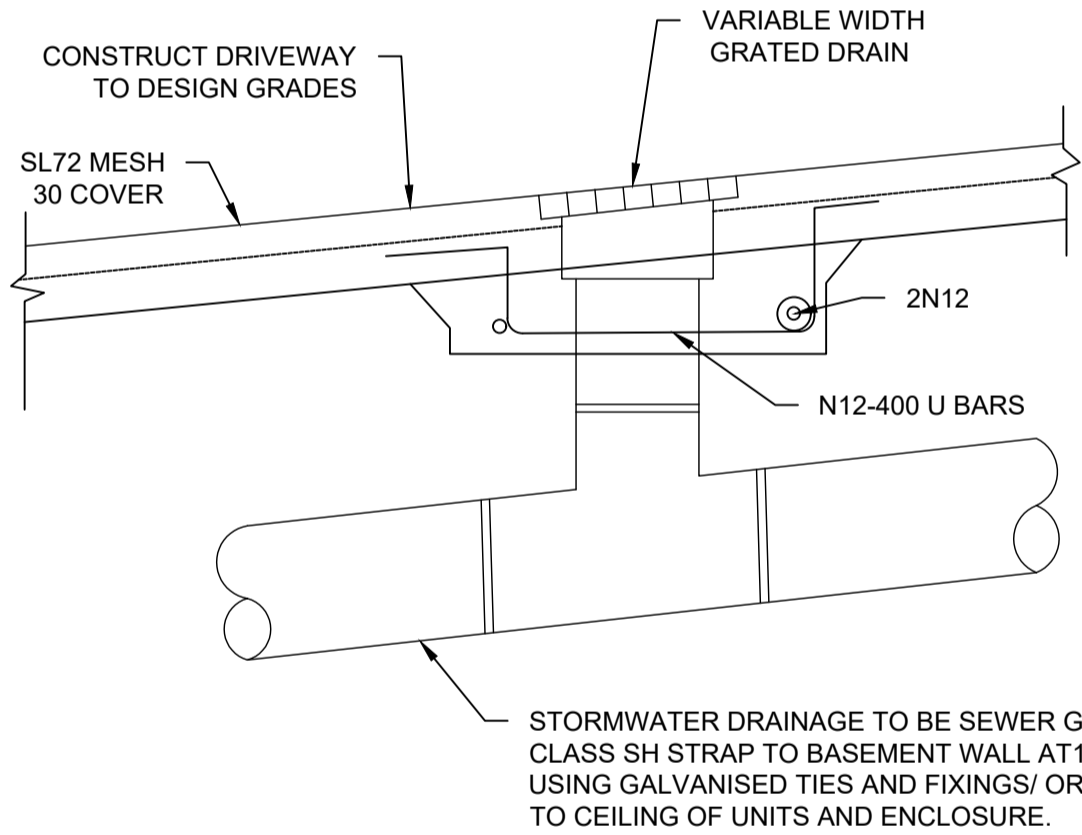


SEDIMENT & EROSION NOTES

1. IMMEDIATELY FOLLOWING SETTING OUT OF THE WORKS, BUT PRIOR TO COMMENCEMENT OF ANY CLEARING OR EARTHWORKS, THE CONTRACTOR AND SUPERINTENDENT SHALL WALK THE SITE TO NOMINATE THE LOCATIONS AND TYPES OF SEDIMENT AND EROSION CONTROL MEASURES TO BE ADOPTED. THESE MEASURES SHALL BE IMPLEMENTED PRIOR TO ANY CLEARING OR EARTHWORKS AND MAINTAINED UNTIL THE WORKS ARE COMPLETED AND NO LONGER POSE AN EROSION HAZARD, UNLESS OTHERWISE APPROVED BY THE SUPERINTENDENT.
2. IMMEDIATELY FOLLOWING SETTING OUT OF THE WORKS, BUT PRIOR TO COMMENCEMENT OF ANY CLEARING OR EARTHWORKS, THE CONTRACTOR AND SUPERINTENDENT SHALL WALK THE SITE TO IDENTIFY AND MARK TREES WHICH ARE TO BE PRESERVED. NOTWITHSTANDING THE ABOVE, THE CONTRACTOR SHALL TAKE ALL REASONABLE PRECAUTIONS TO MINIMISE DISTURBANCE TO EXISTING VEGETATION AND GROUND COVER OUTSIDE THE MINIMUM AREAS REQUIRED TO COMPLETE THE WORKS AND SHALL BE RESPONSIBLE FOR RECTIFICATION, AT ITS OWN COST, OF ANY DISTURBANCE BEYOND THOSE AREAS.
3. PROVIDE GULLY GRATE INLET SEDIMENT TRAPS AT ALL GULLY PITS.
4. PROVIDE SILT FENCING ALONG PROPERTY LINE AS DIRECTED BY SUPERINTENDENT.
5. ADDITIONAL CONTROL DEVICES TO BE PLACED WHERE DIRECTED BY THE PRINCIPLE.
6. ALTERNATIVE DESIGNS TO BE APPROVED BY SUPERINTENDENT PRIOR TO CONSTRUCTION.
7. WASH DOWN/RUMBLE AREA TO BE CONSTRUCTED WITH PROVISIONS RESTRICTING ALL SILT AND TRAFFICKED DEBRIS FROM ENTERING THE STORMWATER SYSTEM.
8. NO WORK OR STOCKPILING OF MATERIALS TO BE PLACED OUTSIDE OF SITE WORK BOUNDARY.
9. APPROPRIATE EROSION AND SEDIMENT CONTROLS TO BE USED TO PROTECT STOCKPILES AND MAINTAINED THROUGH OUT CONSTRUCTION.
10. IT IS THE CONTRACTORS RESPONSIBILITY TO TAKE DUE CARE OF NATURAL VEGETATION. NO CLEARING IS TO BE UNDERTAKEN WITHOUT PRIOR APPROVAL FROM THE SUPERINTENDENT.
11. TO AVOID DISTURBANCE TO EXISTING TREES, EARTHWORKS WILL BE MODIFIED AS DIRECTED ON-SITE BY THE SUPERINTENDENT.
12. THE LOCATION OF EROSION AND SEDIMENTATION CONTROLS WILL BE DETERMINED ON SITE BY THE SUPERINTENDENT.
13. ACCESS TRACKS THROUGH THE SITE WILL BE LIMITED TO THOSE DETERMINED BY THE SUPERINTENDENT AND THE CONTRACTOR PRIOR TO ANY WORK COMMENCING.
14. ALL SETTING OUT IS THE RESPONSIBILITY OF THE CONTRACTOR PRIOR TO WORKS COMMENCING ON SITE. THE SUPERINTENDENT'S SURVEYOR SHALL PEG ALL ALLOTMENT BOUNDARIES, PROVIDE COORDINATE INFORMATION TO THESE PEGS AND PLACE BENCH MARKS. THE CONTRACTOR SHALL SET OUT THE WORKS FROM AND MAINTAIN THESE PEGS.
15. PLANS ARE MINIMUM REQUIREMENTS AND ARE TO BE USED AS A GUIDE ONLY. EXACT MEASURES USED SHALL BE DETERMINED ON SITE IN CONJUNCTION WITH PROGRAM OF CONTRACTORS WORKS etc.

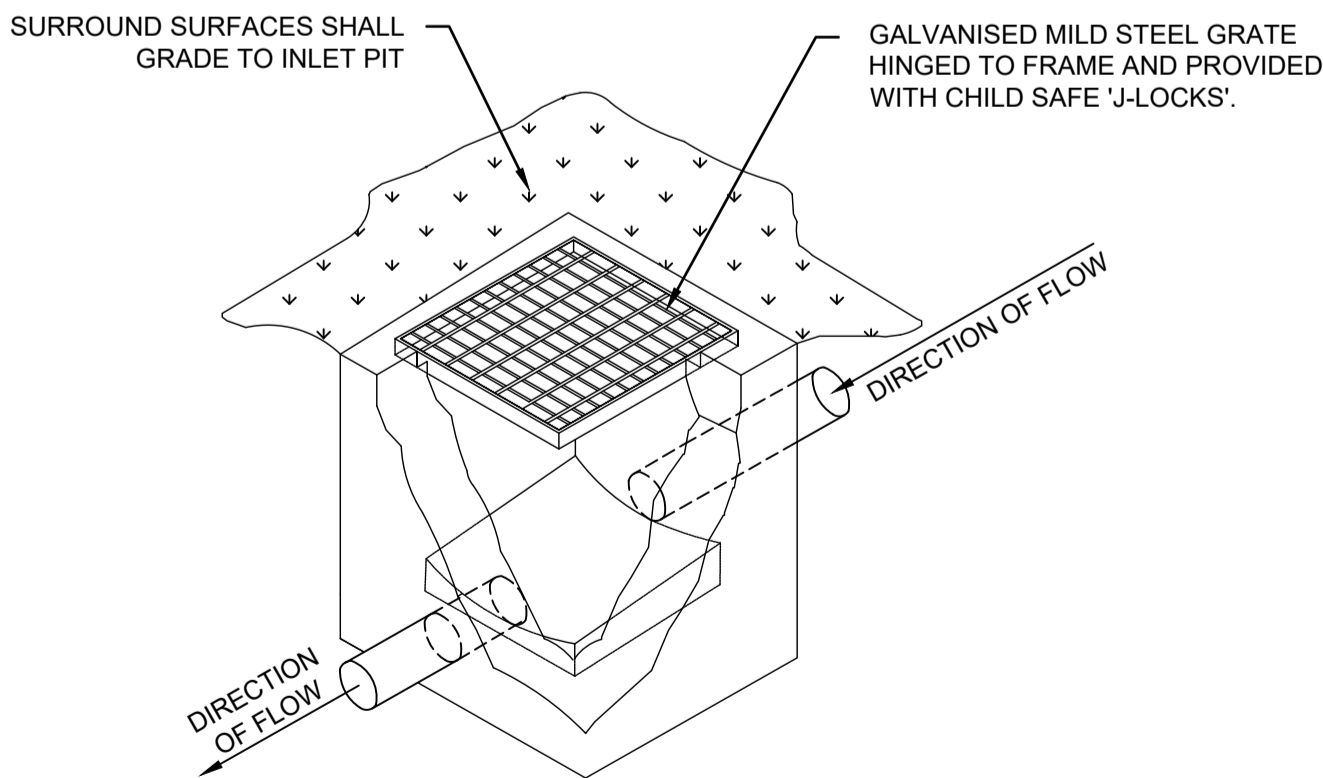
LEGEND

- ExS EXISTING SEWER MAIN (FROM RECORDS)
- ExT EXISTING TELSTRA (FROM RECORDS)
- EXISTING CONTOUR
- EXISTING SURFACE LEVEL
- EARTHWORKS LEVEL
- DESIGN SURFACE LEVEL
- SILT FENCE
- CUT AREA
- STABILISED SITE ACCESS
- 1.8 HIGH CONSTRUCTION BARRIER FENCING
- TREES TO BE RETAINED
- TREES TO BE REMOVED
- INLET PROTECTION



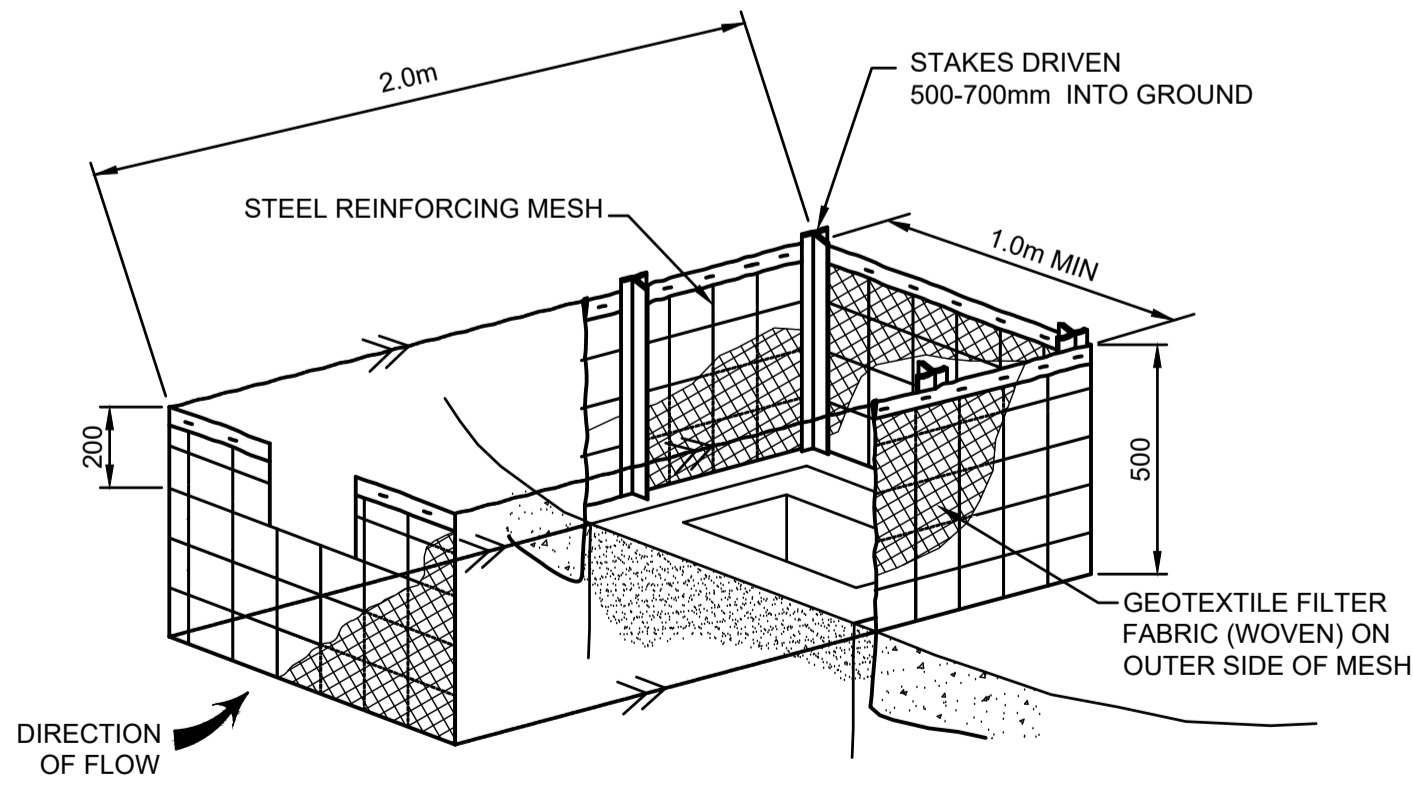
GRATED DRAIN DETAIL

N.T.S.



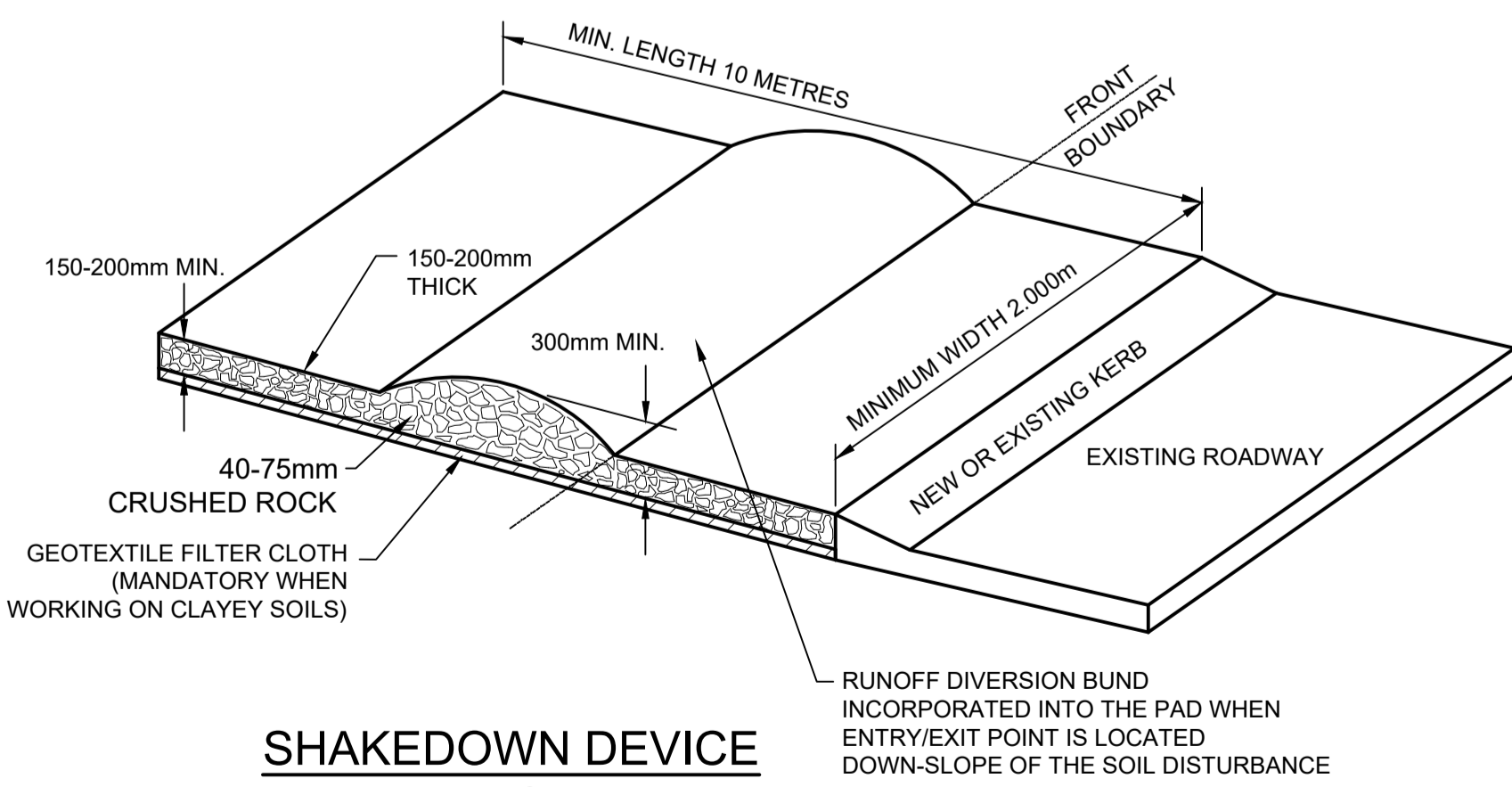
TYPICAL GRATED INLET PIT DETAIL

N.T.S.



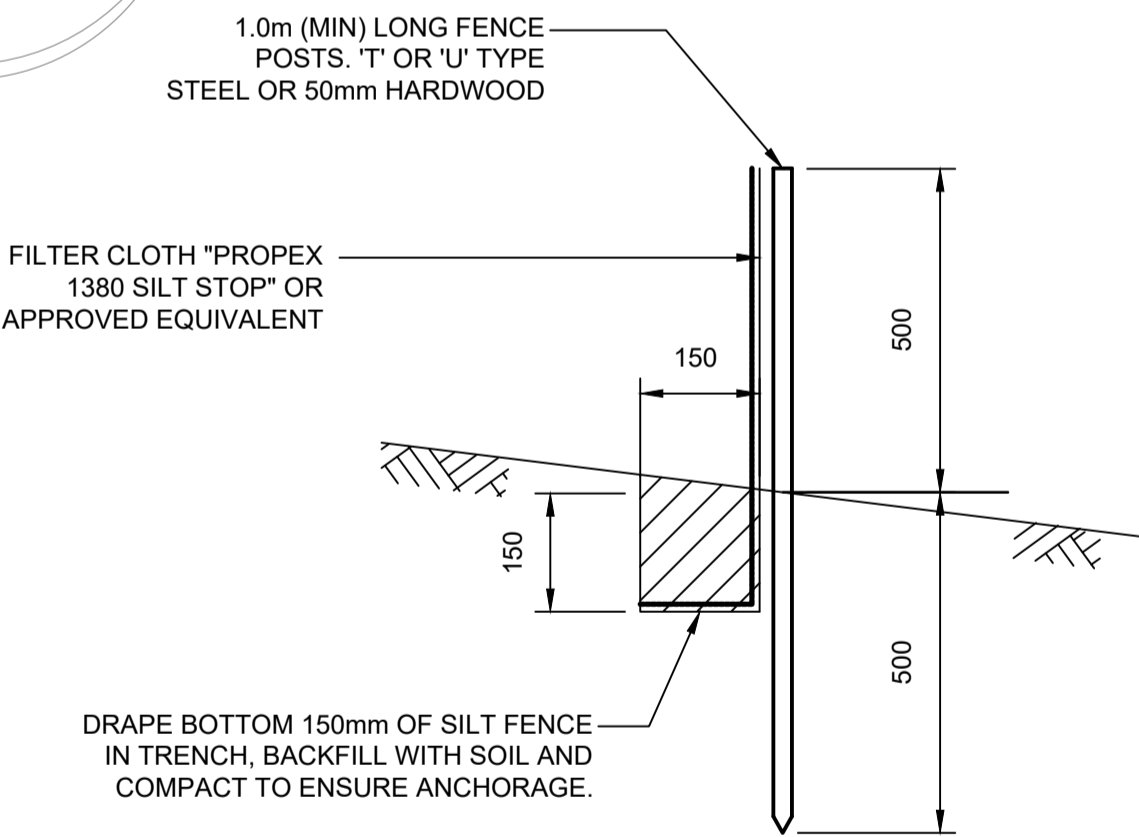
FIELD INLET SEDIMENT TRAP

N.T.S.



SHAKEDOWN DEVICE

N.T.S.



SILT FENCE DETAIL

N.T.S.

SILT FENCE NOTES:

1. FILTER CLOTH TO BE FASTENED SECURELY TO POSTS WITH GALVANISED WIRE TIES, STAPLES OR ATTACHMENT BELTS.
2. POSTS SHOULD NOT BE SPACED MORE THAN 3.0m APART.
3. WHEN TWO SECTIONS OF FILTER CLOTH ADJOIN EACH OTHER THEY SHALL BE OVERLAPPED BY 150mm AND FOLDED.
4. FOR EXTRA STRENGTH TO SILT FENCE, WOVEN WIRE (14mm GAUGE, 150mm MESH SPACING) TO BE FASTENED SECURELY BETWEEN FILTER CLOTH AND POSTS BY WIRE TIES OR STAPLES.
5. INSPECTIONS SHALL BE PROVIDED ON A REGULAR BASIS, ESPECIALLY AFTER RAINFALL AND EXCESSIVE SILT DEPOSITS REMOVED WHEN "BULGES" DEVELOP IN SILT FENCE.
6. SEDIMENT FENCES SHALL BE CONSTRUCTED WITH SEDIMENT TRAPS AND EMERGENCY SPILLWAYS AT SPACINGS NO GREATER THAN 40m ON FLAT TERRAIN DECREASING TO 20m SPACINGS ON STEEP TERRAIN.

NOT FOR CONSTRUCTION

A										ISSUE FOR DEVELOPMENT APPLICATION		09/12/2020		AGA		JSF	
Issue		Description								Date		Design		Checked			
10m at full size		10m												20cm			

Certification By Dr. Anthony Hasham (NPER)

Idraft Architects Pty Ltd  
Unit 43.2 Slough Avenue,  
Silverwater NSW 2128  
PHONE : 02 9648 8848  
Email : pierre@idraft.com.au  
www.idraft.com.au

Council  
Liverpool  
City Council

Scale  
0 2 4 6 m  
SCALE 1:100 @ A1

AUSTRALIAN  
CONSULTING  
ENGINEERS.  
PTY LTD - A.C.N. 084 059 941  
LEVEL 4, 470 CHURCH STREET NORTH PARRAMATTA NSW 2150  
PH: (02) 9765 1500 FX: (02) 9765 1515  
EMAIL: info@acseeng.com.au

Project  
23 - 25 CHARLES STREET, LIVERPOOL  
PROPOSED MULTI-UNIT DEVELOPMENT  
STORMWATER CONCEPT PLANS  
DEVELOPMENT APPLICATION

Drawing Title  
SEDIMENT & EROSION  
CONTROL PLAN

Scale  
1:100  
Project No.  
200977  
Dwg. No.  
104  
Issue  
A